

Proudly supported by

**MANSELL  
McTAGGART**  
Trusted since 1947

# Copthorne Magazine

August/September 2024



## *The Copthorne* Harvest Festival

Saturday 28th & Sunday 29th September 2024



## Local contacts

To add your organisation or change details, please  
contact the Editor - [magazine@copthornechurch.org](mailto:magazine@copthornechurch.org)

### Allotments

Burstow Parish Council - 01342 841880

### Copthorne & District Angling Society

General Secretary: Paul Whitfield  
01342 617360 - 07495565714  
[www.cdass1929@gmail.com](http://www.cdass1929@gmail.com)

### Copthorne Archive

Sue Snelling - 07884 038002  
[copthornearchive@gmail.com](mailto:copthornearchive@gmail.com)

### Copthorne Art Group

Margaret Jones - 01342 604609

### Copthorne Cots2Tots

(parent & baby/toddler group)  
Annabelle Mundy - 07732 335193

### Copthorne Carnival

Graham Casella - 01342 714291  
[grahamcasella@gmail.com](mailto:grahamcasella@gmail.com)  
[www.copthornecarnival.co.uk](http://www.copthornecarnival.co.uk)

### Copthorne Chapel

[www.copthornechapel.org.uk](http://www.copthornechapel.org.uk)

### Copthorne Cricket Club

Paul Smart - 07913 493974  
[www.copthorne.play-cricket.com](http://www.copthorne.play-cricket.com)

### Copthorne Guides

(+ Rainbows, Brownies & Rangers)  
Jo Wickes - 01342 716094

### Copthorne Junior School

Head: Mrs Helen Denison  
01342 712372

### Copthorne Ladies Club

Sharon Cannon (President)  
07905 403121  
Beth Hilton (Secretary) 07411 699241

### Copthorne Players

[hello@copthorneplayers.co.uk](mailto:hello@copthorneplayers.co.uk)

### Copthorne Prep School

Head: Mr Nathan Close 01342 712311

### Copthorne Scouts

Membership Secretary:  
Jill Creek - 07720 533875  
[jill.creek@egscouts.org.uk](mailto:jill.creek@egscouts.org.uk)

### Copthorne Sports & Community Association

[www.copthorne-sca.co.uk](http://www.copthorne-sca.co.uk)  
[info@copthorne-sca.co.uk](mailto:info@copthorne-sca.co.uk)  
FB: Copthorne Sports and Community Association Ltd

### Copthorne Silver Band

Sheila Feasey - 07889 681268

### Copthorne Table Tennis Club

Karen Lelliott - 01342 719069

### Copthorne Village Association

[info@copthornevillage.org](mailto:info@copthornevillage.org)  
[www.copthornevillage.org](http://www.copthornevillage.org)  
FB: Copthorne Village Association

### Copthorne Village Badminton Club

Ian Hornsby - 01342 714754

### Copthorne WI

Sandy Ward - 01342 713076  
[infocopthorne@surreyfedwi.org.uk](mailto:infocopthorne@surreyfedwi.org.uk)

### Copthorne Youth Football Club

[cyfc.sec@gmail.com](mailto:cyfc.sec@gmail.com)

### Crawley Bridge Club

Helen Kent - 01342 719779

### Fairway Infant School

Head: Miss E. Singleton  
01342 713691

### Friday Friends

Pam Harrison  
01342 717194

### The Little House Montessori Nursery

Principle: Lisa Watkins - 07938 524184

### Local Action Team - Vacant

### Neighbourhood Watch - Vacant

### N T C - TS Swiftsure

Commanding Officer: Stephen Gilbert  
01293 571533 - [swiftsure@ntc.org.uk](mailto:swiftsure@ntc.org.uk)  
Chair: Gary Palmer - 07837 399196  
[www.ntc.org.uk/swiftsure](http://www.ntc.org.uk/swiftsure)

### Peter Pan Playgroup

General Enquiries - 07745 255501  
Waiting List: 01342 714692  
[www.peterpanplaygroup.co.uk](http://www.peterpanplaygroup.co.uk)

### Probus Club of Horley & District

Derek Hanks - 01342 714411  
[www.probusclubhorley.org](http://www.probusclubhorley.org)

### St John's Church Office

01342 712063  
[office@copthornechurch.org](mailto:office@copthornechurch.org)

### Vicar

Revd Wim Mauritz - 01342 457064  
[vicar@copthornechurch.org](mailto:vicar@copthornechurch.org)

### Associate Vicar

Revd Alexandra Wheeler - 01342 717561  
[associate.vicar@copthornechurch.org](mailto:associate.vicar@copthornechurch.org)

### Churchwardens

David Hornsby - 07954 162319  
Gillian Hodsdon - 07708 110481

### Curate

Revd Fiona Coldicott - 07459 111591  
[curate@copthornechurch.org](mailto:curate@copthornechurch.org)

### Treasurer

[finance@copthornechurch.org](mailto:finance@copthornechurch.org)

### PCC Secretary

[office@copthornechurch.org](mailto:office@copthornechurch.org)

### Sunshine Preschool

07963 501762  
[www.stjohnssunshinepreschool.co.uk](http://www.stjohnssunshinepreschool.co.uk)  
[stjohnssunshine@hotmail.co.uk](mailto:stjohnssunshine@hotmail.co.uk)

### Worth Horticultural Society

Brian Burton - 07903 758258  
[worthhortisoc@gmail.com](mailto:worthhortisoc@gmail.com)

### Worth Parish Council

Worth Council Offices, The Parish Hub,  
Borers Arms Road, Copthorne RH10 3ZQ  
01342 713407 [clerk@worth-pc.gov.uk](mailto:clerk@worth-pc.gov.uk)  
[www.worth-pc.gov.uk](http://www.worth-pc.gov.uk)

## Hall hire

### Copthorne Parish Hub

**Main Hall** Tracey Price - 07853 653649  
[parish.hub@copthornechurch.org](mailto:parish.hub@copthornechurch.org)  
**South Room** Hannah Smith - 01342 713407  
[deputyclerk@worth-pc.gov.uk](mailto:deputyclerk@worth-pc.gov.uk)

### Copthorne Scout Centre/Guide Hall

Lesley Dawson - 01342 716590

### Copthorne Jubilee Pavilion

[www.copthorne-sca.co.uk](http://www.copthorne-sca.co.uk)  
[info@copthorne-sca.co.uk](mailto:info@copthorne-sca.co.uk)  
[bookings\\_csca@outlook.com](mailto:bookings_csca@outlook.com)

### Copthorne Village Hall

Adele Ruddock - 07716864623  
[cvh.enquiry@gmail.com](mailto:cvh.enquiry@gmail.com)  
[www.copthornevillagehall.co.uk](http://www.copthornevillagehall.co.uk)

### Copthorne Junior School

01342 712372

### Delmar Morgan Centre

Christine Cheesmur - 01293  
881153/07912671962

### Fairway Infant School

01342 713691

## Editorial

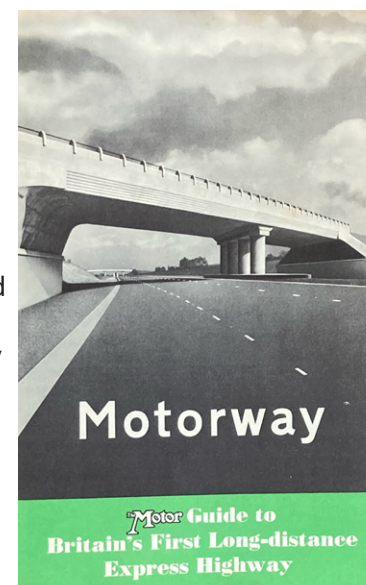
I started writing this editorial from the second lane on the A3 junction about to turn right onto the M25 on the third ever weekend closure (to install a new bridge at this very congested junction).

It's summer and those who are taking a staycation are facing the prospect of planning their route around gridlocked bypasses, rush hour motorway traffic, roadworks and more recently, the aforementioned closures of complete sections of motorway. So when I came across a November 1959 copy of 'The Motor' recently I was intrigued to have been offered a glimpse of life 65 years ago when motorways were still in the embryonic stages of construction.

A special pull out feature heralded the new 66 mile long, three lane, fast carriageway, the M1 (to be opened only the following month) as a new and exciting way to bridge the north south divide in record speeds. The dawn of a new era of travel beckoned and a departure from the existing dire roads that, at the time, were beginning to constitute a national transport crisis.

The two-colour printed pamphlet showed the new route from London to Birmingham in detail using a calligraphic script that gives it the feeling of a tourist leaflet and featuring an enticingly empty and flat road spanned by a futuristic concrete bridge.

The text offered some guidance to drivers for this new concept. As the route passed through wide swathes of untouched countryside there is a warning to the driver not to drift off and admire the scenery! Also a wise precaution, in those pre MOT days, to make sure their vehicle was in good working order, at least making sure there was sufficient oil, fuel and water and the tyres in good condition and inflated correctly. No mention of brakes, but Ferodo covered those in their full page advert 'You've all the Time in the World... Haven't You?' for Anti-Fade Brake Linings and Disc Brake pads with warnings about the punishing effects on brakes of the new high motorway speeds. Thankfully the MOT test was introduced the following year in 1960 but initially cars were only first tested after 10 years - it wasn't until 1967 that it changed to 3 years.



Among the many benefits cited were... 'the gradients are gentle, so that heavy industrial traffic is not slowed unduly, and the radius of bends is slight to allow cruising speeds of at least 80mph to be maintained!' There was no speed limit on motorways until 22nd December 1965 when a national speed limit of 70 mph was imposed - initially for a four month trial period which was extended and made permanent in 1967.

The very handy checklist of DOs and DON'Ts went further to make sure that the public knew what the totally new concept of the hard shoulder was to be used for... or not!

DO remember that a stationary vehicle on the carriageway is as much of a danger as a broken rail is to a train. Drive onto the hard shoulder (on your left) in an emergency; it is designed for this purpose and there are S.O.S. phones every mile.  
DON'T stop to picnic, or for other pleasurable reasons, on the hard shoulder. It is there for emergencies.

Also advertised were the new services at Newport Pagnall which hadn't quite been finished. When they were, they too embraced the excitement of the time - 'suit and tie' dining while sitting on chrome bar stools with Fortes & Co Ltd catering meant that eating out by the motorway was considered a highly prestigious occasion, and quite possibly the main event of a good day out. Maybe too good, as the 1960 Road Traffic Act, effectively reconfirmed an older 1930 act that it was an offence to drive, attempt to drive or be in charge of a motor vehicle on a road or other public place while 'unfit to drive through drink or drugs', although no legal drink driving limit was set until 1967.



Newport Pagnall grill restaurant\*



Whether we liked it or not, the motorway was here to stay. It was a testimony to the then Minister of Transport, the Rt Hon Harold Watkinson, MP (along with consulting engineers, Sir Owen Williams and Partners) who will be forever deservedly credited for delivering the project within the contract time of 19 months at a cost of about £20m.

Lastly, I want to leave you with this tip from the DOs and DON'Ts as I'm sure you'll agree it still seems as pertinent now as it did back in 1959...!

DON'T pass on the left of another vehicle, nor drive in such a manner that other vehicles are encouraged to do this to you.

Happy holidays!

Fiona





SUNDAY

8 <sup>AM</sup>	<b>A quiet Holy Communion service</b> <i>that follows the pattern set out in the Book of Common Prayer.</i>
9.30 <sup>AM</sup>	<b>A traditional service</b> <i>with hymns accompanied by the organ and choir.</i>
11 <sup>AM</sup>	<b>An informal service</b> <i>relaxed, all-age celebration with worship and teaching.</i>

DURING THE WEEK

<b>TUESDAY 9.15 AM</b> Morning prayer	<b>WEDNESDAY 10.30 AM</b> Holy Communion	<b>THURSDAY 9.15 AM</b> Morning prayer
--	---	---

Several of our services are also live-streamed via the St John's Facebook page and made available on the church's YouTube channel. Occasionally our church services will be run as ticketed events. For more details see [cophornechurch.org](http://cophornechurch.org)

UPCOMING SEASONAL SERVICES

**Harvest Celebration Service**

Sunday 29<sup>th</sup> September  
10.30am

**Pumpkin Carving Service**

*Celebrating the Light of  
the World among us*  
Sunday 27<sup>th</sup> October  
11am

**All Souls Sunday Service**

Sunday 3<sup>rd</sup> November  
4pm

**Remembrance Sunday Service**

Sunday 10<sup>th</sup> November  
10.30am

CONTACT ADDRESS

St John's Church Office (at the Church) Church Road, Copthorne  
RH10 3RD (Mon, Tue & Thu: 10am – 2 pm)

ENQUIRIES

Church: 01342 712063 or [office@cophornechurch.org](mailto:office@cophornechurch.org)  
Parish Hub: 07853 653649 or [parish.hub@cophornechurch.org](mailto:parish.hub@cophornechurch.org)  
Vicar: 01342 457064 or [vicar@cophornechurch.org](mailto:vicar@cophornechurch.org)  
Assoc Vicar: 01342 717561 or [associate.vicar@cophornechurch.org](mailto:associate.vicar@cophornechurch.org)  
Curate: 07459 111591 or [curate@cophornechurch.org](mailto:curate@cophornechurch.org)

GROWING IN LOVE  
for God & each other

[cophornechurch.org](http://cophornechurch.org)



The start of the autumn term is usually a busy season for St John's Church. We have several events and courses lined up. Here is a summary of three of our key events starting in September.

(1) The **Copthorne Harvest Festival**. In our village we will celebrate our traditional harvest festival on Sat 28th and Sun 29th Sept. As in previous years this starts with the Harvest Fair and the Flower & Produce Show, with the musical contributions of the Copthorne Silver Band. The next day we will have a Harvest Thanksgiving Service followed by with a Harvest Lunch in the Parish Hub.

(2) Also starting in September is a brand-new **Alpha Course**. At St

John's we believe that everyone should have the chance to explore faith more deeply, to ask questions, and share their point of view. That's why we are running regular Alpha courses at our church. Alpha is a series of sessions exploring the Christian faith. Each talk looks at a different question around faith and is designed to create conversations. No two Alphas look the same, but generally they have three key things in common: hospitality, a talk and good conversation. There's no obligation to say anything and there's nothing you can't say. It's an opportunity to hear from others and contribute your own perspective in friendly and open environment. We will be starting

our Alpha on Mon 9th September.

(3) Finally, we will also run the **Prayer Course II**. This is a five session course designed to help small groups explore the difficult questions we all ask about prayer. Following the success of the first Prayer Course, these sessions go deeper, provoking honest conversation around the hardest and most personal questions. Each session includes a video, a guide for small group discussion and practical ideas for prayer. This course starts on Wed 11th September. For more details on how to sign up to any of these or other events visit the 'What's On' page at [cophornechurch.org](http://cophornechurch.org).



# The Copthorne Harvest Festival

Saturday 28th & Sunday 29th September 2024

A weekend at St John's Church to celebrate Harvest!

## Got questions?

### #TryAlpha

Starting on Mon 9<sup>th</sup> September at St John's Church  
To book a place visit: [cophornechurch.org](http://cophornechurch.org)





## unanswered prayer

the prayer course II

Five sessions each one our, to find out more visit [cophornechurch.org](http://cophornechurch.org)





## BUSINESS NETWORKING GROUP BASED IN COPTHORNE

We meet weekly at Copthorne Golf Club  
Thursday 6.30am - 8.30am

Explore our members and their services below:



SCAN ME



**sussexfrenchtutor.co.uk**  
07957 418 008



**Tinder Box**  
Business Consulting  
07473 298 853



**Charity**  
Taylor-Made Dreams  
taylormadedreams.org.uk



**alexandersca.co.uk**  
01293 263 150



**Mulgrave Heating**  
mulgraveheatingltd.co.uk  
020 8642 6819



**Steve Dyson**  
Mortgage Adviser  
stevedyson.co.uk  
07725 720 873



**PG&HM**  
Paul's Garden and Home  
Maintenance  
Gardening & Handyman  
07825 663 933



**Interior Solutions**  
Kitchen & Bathroom Fitter  
interiorsolutions.org.uk  
07772 013 716



**thewoodflooringshop.com**  
0208 949 7848



**Electrician - jcgelectrical.com**  
01883 672 189



**Spreadsheets & Databases**  
sussexdatasolutions.co.uk  
01293 972 902



**Utilities Supplier**  
uw.partners/julie.and.paul  
07985 946 006



**meerslegalservices.co.uk**  
Will Writer - 0203 858 0307



**Roofing & Rendering**  
exteriorhomecare.co.uk  
0208 718 1921



**East Grinstead**  
effectiveeducation.net  
01342 319139



**redmondassociates.co.uk**  
01342 833 448



**Fire Extinguisher Supply & Maintenance**  
01342 716 011



**pknetworks.co.uk**  
IT Support - 01342 601 217



**Peter.Nottingham@apexfp.co.uk**  
Pension Advisor - 07846 917 506



**www.brandingbox.io**  
Graphic & Website Design  
01444 711 000



**Fire Risk Assessments**  
Legal Compliance - ilisi.co.uk  
01444 811 434



**Photography, Videography, Drone Work**  
stephenjohnsonphotography.com  
07788 410 930



**Capital Allowances & Property Tax**  
www.electca.co.uk  
07917 783 893



**thedampandtimbercompany.com**  
01737 212 272

If you are interested in visiting or joining our group  
please call Chris on 07971 963 002

www.trustedreferrals.co.uk

## DW Services

Est 10 years

PAINTING & DECORATING, GENERAL  
MAINTENANCE, INTERIOR & EXTERIOR

Copthorne, Crawley, Horley, Horsham &  
East Grinstead areas \* Discounted rates for  
Copthorne residents \* **FREE ESTIMATES**

**Dyon Wiseman 07810 073641**  
dwservicespaintinganddecorating@hotmail.com

Advertise in this space  
for £16.80 per issue

## Blakemore & Sons

Copthorne's  
Family  
Estate  
Agent



**01342 715775**

## Specialist Engineering Solutions

Your partner in Industrial Automation  
Proud to support Copthorne Parish Magazine

**Tel: 01342 713177**  
Web: www.ses-ltd.uk.com  
Email: enquiry@ses-ltd.uk.com

## Sports injury or aching muscles and joints?



Osteopath Jo Barber can help relieve  
the pain of backache, headaches, frozen  
shoulder, whiplash, arthritis, postural  
problems and many other ailments.  
AXA PPP and BUPA recognised.  
[www.osteopathysussex.co.uk](http://www.osteopathysussex.co.uk)

**The Ark**  
Turners Hill  
RH10 4RA  
**01342 712266**

## MR Computing

38 years of combined experience in IT

Local, Professional and Family Owned  
business since 2005

**NO FIX NO FEE & NO CALL OUT CHARGE**

- Punctual visits at an agreed time or collection & drop off service.
- Apple & Windows computer & tablet/phone support for Business & Home.
- Reliable wireless range improvement for Home & Business.
- Most work carried out in a one hour visit. Fixed price workshop repairs.
- Repairs, speedup and maintenance, Data transfer/recovery, Computer malware/virus removal.
- New computers supplied/set up and made to feel familiar.

**Call Mark & Sue on: 01342 349109**  
**OR 0800 6129534**  
**Email: office@mrcomputing.net**

Website - [www.mrcomputing.net](http://www.mrcomputing.net)  
Reviews - [mrcomputing.net/reviews](http://mrcomputing.net/reviews)



## Jr Golby

Electrical

Re-Wires & Alterations  
Domestic & Commercial Installations  
Part P Registered • Inspection & Testing

**t:01342 713244 m:07843 680451**

## Piano lessons !

Friendly teacher welcomes beginners + returners  
Fully qualified with 29+ years experience

Sharon Harris BA Hons LRSM. 07789 172473  
[sjharris.pianoteacher@gmail.com](mailto:sjharris.pianoteacher@gmail.com)  
From £20 per 30 mins. Can be online



## ENROL NOW!

Join us in September

Dance Classes at Inspire Dance  
Studio in Copthorne!

Suitable for ages 2 years +  
Tap, Ballet, Modern, Street Dance,  
Acro & Musical Theatre

**BOOK YOUR  
FREE TRIAL  
CLASS NOW!**

inspireacademyofdance.co.uk



**2024**

## Bonfire & Fireworks

Saturday 2nd November  
Humphrys Field Bowers Arms Road

## Tell us more!

Tell us about your... **Job  
Vacancies, Volunteering  
Opportunities, Clubs, Events,  
Productions** and more!

If you are interested in telling  
our readers more about your  
**Business**, we are happy to offer  
existing or prospective  
advertisers **Editorial Space!**

And if you are participating in  
a **Fundraising Event** we offer  
**Sponsorship** in exchange for a small  
paragraph about your event!

**Contact:**  
[magazine@copthornechurch.org](mailto:magazine@copthornechurch.org)





# Worth Parish Council Newsletter

## Copthorne Village

### Mid Summer 2024

#### WORTH PARISH COUNCIL UPDATE

Councillor Tony Dorey was voted in to continue as council chairman for another year, at the annual meeting in May. Tony said; 'I'm honoured to be given this opportunity, and to continue to serve the

community. I would like to thank Councillor Kerry Scott for his support over the last three years as Assistant Chairman, and to welcome Councillor Phillip Coote who has now taken over this role'.

#### SPEEDING WITHIN THE VILLAGE

The recent serious accident that occurred outside St Francis' Convent on Copthorne Bank has shocked us all; our thoughts are with the couple concerned as they continue to recover in hospital. The council is doing all it can to try to make this stretch of road safer - a site meeting has been arranged with the local area highways manager to discuss possible options. It is hoped that a Surrey Highways representative will also be present due to the close proximity to the county border. We will keep you updated as to our progress.

To assist in our campaign, we are using data supplied by Copthorne Village Community Speedwatch. They are in desperate need of volunteers, and are appealing for more to come forward. Being a volunteer would

mean that you would be on speedwatch duty for around one hour every two or three weeks, although this can be more or less if you so wish.

For more information, go to [communityspeedwatch.co.uk](https://communityspeedwatch.co.uk), and click on Register/Join an Existing Group, and follow the drop down links to reach the 'Crawley - Copthorne Village' group. Alternatively, email Steve O'Connell at Sussex Police at [Stephen.oconnell@sussex.pnn.police.uk](mailto:Stephen.oconnell@sussex.pnn.police.uk).

If you do witness speeding in the village, please report this on Operation Crackdown via [operationcrackdown.org](https://operationcrackdown.org).

#### COPTHORNE RECREATION GROUND REJUVENATION PROJECT

This involves several distinct phases, including drainage works, the introduction of a Multi-Use Games Area (MUGA), a new playground, car parking spaces, landscaping and pathways. Whilst we have been successful in obtaining money for the MUGA, our previous applications for grant funding for the playground were unsuccessful. We have therefore

been liaising with Mid Sussex District Council and local developers about the possibility of obtaining Section 106 monies for this and the remaining works. We have been given the go-ahead to put in an application for a grant and our application will be considered next month.

#### CCTV PROJECT

We have experienced some delays in moving the CCTV Project forward, due to our preferred supplier's commitment to update existing technologies in the Sussex Police area. We understand that work is due to finish shortly and we will be liaising with the preferred supplier to answer any final questions and resolve any remaining connectivity and wayleaves issues (the agreement required between the landowners and those who will access the land to do the work to install, service, maintain, repair, and replace the CCTV equipment).

After a review of the CCTV project, the council agreed that the first phase of the project will include 2 CCTV cameras, rather than the 4 originally anticipated. One will be placed on Copthorne village green. The other will be on the corner of Burleigh Way in Crawley Down. This will enable us to install those that are the simplest to install as they are not impacted by other projects, such as the Copthorne recreation ground project.

Once installed we will allow a 6-month period to review how things are going before deciding whether to install more.

#### GRAFFITI

The parish council is aware of recent graffiti incidents in both Copthorne and Crawley Down. We are monitoring these and liaising with the local police.

If you see any more instances, please contact the police on 101.

#### YOUTH CLUB

Our youth clubs in both Copthorne and Crawley Down continue on a weekly basis, and there will be plenty of extra activities coming up during the school summer holidays. Keep an eye open for our summer programme, which is due to be released very soon.

Our Youth Clubs run:

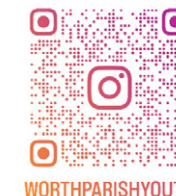
**Monday 3.30-5.30pm at The Haven Centre in Crawley Down.**

**Wednesday 4-6pm at The Pavilion in Copthorne.**

**For Years 5 and up. They are completely FREE and there is no need to book!**

Please note, we do have a limit on numbers at each youth club due to adult/child ratios. So please check there is space for your child before leaving.

You can keep up to date with everything youth related by following us on Instagram or Facebook.



WORTHPARISHYOUTH

#### COPTHORNE COMMUNITY CLEAN UP

As always, we would like to extend our appreciation to Julie Etheridge and Kara Hopkins and all the volunteers for their litter picking efforts in Copthorne. There was a great turn out at the last litter pick on June 9th. The next Clean Up is on Sunday 20th July, starting at 9:30am. It will start at the Parish Hub in Copthorne. As usual, we will provide the litter picking equipment but if you do have your own, please bring this along. If you would like to join us or register your interest, please email [enquiries@worth-pc.gov.uk](mailto:enquiries@worth-pc.gov.uk).



#### HIRE OF THE SOUTH ROOM

Our bright and spacious South Room is available to hire for one off events or for longer term/regular bookings.

If you would like to come and take a look at the room to see if it meets your needs, please email us at [enquiries@worth-pc.gov.uk](mailto:enquiries@worth-pc.gov.uk).

You can also find out more here [https://www.worth-pc.gov.uk/The\\_South\\_Room\\_42763.aspx](https://www.worth-pc.gov.uk/The_South_Room_42763.aspx).



#### FORTHCOMING MEETING DATES

You can view the agendas for all forthcoming meetings and the minutes of meetings that have already been held on our website at [www.worth-pc.gov.uk](http://www.worth-pc.gov.uk). Click on 'council meetings'.



## Useful contacts:

### Anti-social Behaviour

Call 101

[101@sussex.pnn.police.uk](mailto:101@sussex.pnn.police.uk)

<https://www.sussex.police.uk/ro/report/asb/asb/report-antisocial-behaviour>

### Anti-social Driving and Abandoned Vehicles

<http://www.operationcrackdown.org>

### Noise Issues

[www.midsussex.gov.uk/environment/noise-issues/pollution@midsussex.gov.uk](http://www.midsussex.gov.uk/environment/noise-issues/pollution@midsussex.gov.uk)  
01444 477292

### One Network – Find out about roadworks in your area

<https://one.network/uk/westsussex>

### Planning

<https://www.westsussex.gov.uk/planning>

### Report a Problem with a Road or Pavement

West Sussex County Council has changed the process for reporting road and pavement issues. If you want to report a problem with a road or pavement, please now use this link:

[https://www.westsussex.gov.uk/roads-and-travel/make-an-enquiry-or-report-a-problem-with-a-road-or-pavement/?fbclid=IwAR3fRL1oJ546Pk0m08gUUDuF\\_nDHFZ89IBDk6QaRkW-StvfGA11d3G47fOk](https://www.westsussex.gov.uk/roads-and-travel/make-an-enquiry-or-report-a-problem-with-a-road-or-pavement/?fbclid=IwAR3fRL1oJ546Pk0m08gUUDuF_nDHFZ89IBDk6QaRkW-StvfGA11d3G47fOk)

### West Sussex County Council Highways

can also be called on 01243 642105.

For anyone with a hearing impairment textphone is: 18001 01243 642105. Phone lines are open Monday-Friday, 8.00am-6.00pm.

### Street Lights

Street lighting in Worth Parish is partly the responsibility of Worth Parish Council and partly of West Sussex County Council. Any Worth Parish Council streetlighting faults should be reported to the Worth Parish Council office on 01342 713407 or at [enquiries@worth-pc.gov.uk](mailto:enquiries@worth-pc.gov.uk). Other lighting faults should be reported to West Sussex County Council at:

<https://www.westsussex.gov.uk/roads-and-travel/maintaining-roads-verges-and-pavements/lights-markings-and-signs/streetlights-illuminated-signs-and-bollards>

### Sussex Safer Roads Partnership

<https://sussexsaferroads.gov.uk>

## Worth Parish Council CONTACT DETAILS



### Parish Councillor Contact Details

To assist compliance with data protection, any email contact regarding council matters should be made via the email addresses listed below:

#### Crawley Down Ward

Phillip Coote	<a href="mailto:Phillip.coote@worth-pc.gov.uk">Phillip.coote@worth-pc.gov.uk</a>	01342 713443
Alex Cruickshank	<a href="mailto:Alex.cruickshank@worth-pc.gov.uk">Alex.cruickshank@worth-pc.gov.uk</a>	01342 714328
Ian Gibson	<a href="mailto:Ian.gibson@worth-pc.gov.uk">Ian.gibson@worth-pc.gov.uk</a>	01342 716790
Sue Kipps	<a href="mailto:Sue.kipps@worth-pc.gov.uk">Sue.kipps@worth-pc.gov.uk</a>	01342 718289
Peter Bingle	<a href="mailto:Peter.bingle@worth-pc.gov.uk">Peter.bingle@worth-pc.gov.uk</a>	07881 927462
Clare Pointer	<a href="mailto:Clare.pointer@worth-pc.gov.uk">Clare.pointer@worth-pc.gov.uk</a>	07762 132538
Kerry Scott	<a href="mailto:Kerry.scott@worth-pc.gov.uk">Kerry.scott@worth-pc.gov.uk</a>	01342 712213
Therese Wilson	<a href="mailto:Therese.wilson@worth-pc.gov.uk">Therese.wilson@worth-pc.gov.uk</a>	07970 616728
Liz Williams	<a href="mailto:Liz.williams@worth-pc.gov.uk">Liz.williams@worth-pc.gov.uk</a>	07887 575867

#### Copthorne & Worth Ward

Graham Casella	<a href="mailto:Graham.casella@worth-pc.gov.uk">Graham.casella@worth-pc.gov.uk</a>	07710 019516
Tony Dorey	<a href="mailto:Tony.dorey@worth-pc.gov.uk">Tony.dorey@worth-pc.gov.uk</a>	07802 359123
Andrew Dymond	<a href="mailto:Andrew.dymond@worth-pc.gov.uk">Andrew.dymond@worth-pc.gov.uk</a>	07834 486098
Trevor Hodsdon	<a href="mailto:Trevor.hodsdon@worth-pc.gov.uk">Trevor.hodsdon@worth-pc.gov.uk</a>	07771 810220
Bob King	<a href="mailto:Bob.king@worth-pc.gov.uk">Bob.king@worth-pc.gov.uk</a>	07851 332918
Eddie Lord	<a href="mailto:Eddie.lord@worth-pc.gov.uk">Eddie.lord@worth-pc.gov.uk</a>	01342 714905
Chris Phillips	<a href="mailto:Chris.phillips@worth-pc.gov.uk">Chris.phillips@worth-pc.gov.uk</a>	01342 712668
Lauraine Stewart	<a href="mailto:Lauraine.stewart@worth-pc.gov.uk">Lauraine.stewart@worth-pc.gov.uk</a>	07811 223387

### Mid Sussex District Councillor Contact Details

#### Crawley Down & Turners Hill Ward

John Hitchcock	<a href="mailto:John.hitchcock@midsussex.gov.uk">John.hitchcock@midsussex.gov.uk</a>	01342 716831
Ian Gibson	<a href="mailto:Ian.gibson@midsussex.gov.uk">Ian.gibson@midsussex.gov.uk</a>	01342 716790

#### Copthorne & Worth Ward

Chris Phillips	<a href="mailto:Christopher.phillips@midsussex.gov.uk">Christopher.phillips@midsussex.gov.uk</a>	01342 712668
Graham Casella	<a href="mailto:Graham.casella@midsussex.gov.uk">Graham.casella@midsussex.gov.uk</a>	07710 019516

### West Sussex County Councillor Contact Details

#### Worth Forest Ward (including Copthorne)

Bruce Forbes	<a href="mailto:Bruce.forbes@westsussex.gov.uk">Bruce.forbes@westsussex.gov.uk</a>	01342 719866
--------------	--	--------------

#### Imberdown Ward (including Crawley Down)

Ian Gibson	<a href="mailto:Ian.gibson@westsussex.gov.uk">Ian.gibson@westsussex.gov.uk</a>	01342 716790
------------	--	--------------

### Worth Parish Council Officers

Clerk/RFO	Jennifer Nagy	<a href="mailto:clerk@worth-pc.gov.uk">clerk@worth-pc.gov.uk</a>
Assistant Clerk (planning)	Hannah Smith	<a href="mailto:astclerk@worth-pc.gov.uk">astclerk@worth-pc.gov.uk</a>
Assistant Clerk (projects)	Gill Kearny	<a href="mailto:projects@worth-pc.gov.uk">projects@worth-pc.gov.uk</a>
Comms & IT Admin	Dave Showell	<a href="mailto:comms@worth-pc.gov.uk">comms@worth-pc.gov.uk</a>
Youth Worker	Drew Sewell	<a href="mailto:youth@worth-pc.gov.uk">youth@worth-pc.gov.uk</a>
Youth Worker Assistant	Orson Barret-Berry	
Grounds Maintenance Supervisor	Shane Portman	
Grounds Maintenance Officer	Colin Botterill	



### Copthorne Village Millennium Group

The Copthorne Archive,  
The Parish Hub, Borers Arms Road,  
Copthorne RH10 3ZQ

[CopthorneArchive@gmail.com](mailto:CopthorneArchive@gmail.com)  
Facebook: The Copthorne Archive  
Tel: 07884 038002



### Fairway Infants' School

We recently received a random collection of photos from Fairway, including four aerial photos with the school as the focus. In this photo you'll notice the junior school in the top left corner, with the swimming pool to the left of the school buildings, and in the bottom right corner the old Brownie/Guide Hut.

We have no date for these photos, so if you think you can hazard a guess please let us know. We'll post them on our Facebook page, *The Copthorne Archive*, so you can zoom in for a closer look, and maybe spot your house! The school has posted an appeal on the *Friends of Copthorne Old*

*Photos* Facebook group: 'From September, our children will be learning about the history of Fairway school. Does anyone have any photos or information that they would be able to share with us to enrich the children's learning experience? Maybe photos of when the school was built, events that took place, memories of attending the school etc. We would be grateful for any insight you have so we can bring this topic alive for our young learners. We have a copy of the book *Copthorne: the story so far* already. Thank you in advance!'

Perhaps readers of this magazine can help by sharing their memories to help the school.



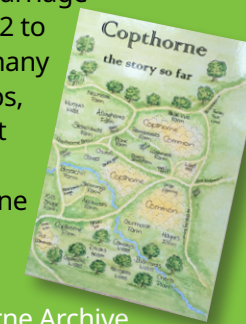
Our remit is to research and preserve the history of our village. The digital world we now live in means that there is less of a paper trail these days, so if you're having a sort out and come across, for example, a receipt from a local business or your property's sales particulars, don't bin it, but send it our way. We're all intrigued by the past, and in 50 years' time someone will be interested in that photo of your football team – so don't forget to add the date, location, and names of people in your photos!

Copies of the book **Copthorne, the story so far** are available for £10 - a very interesting read for anyone new to the village.

#### The Copthorne Archive CD

On sale for £5, contains St John's Church Baptism Records 1877 to 1887, and Marriage Records 1882 to 1916, plus many photos, maps, plans etc not included in the Copthorne book.

The Copthorne Archive  
[CopthorneArchive@gmail.com](mailto:CopthorneArchive@gmail.com)  
Facebook: The Copthorne Archive  
Tel: 07884038002



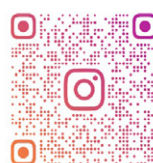
The Council Offices are open to the public 9:30 am to 12 noon Monday - Friday  
Worth Parish Council, First Floor, The Parish Hub, Borers Arms Rd, Copthorne, West Sussex, RH10 3ZQ

[www.worth-pc.gov.uk](http://www.worth-pc.gov.uk)



Facebook

[@worthparishcouncil](https://www.facebook.com/worthparishcouncil)



Instagram

[@worthparishyouth](https://www.instagram.com/worthparishyouth)



Email

[enquiries@worth-pc.gov.uk](mailto:enquiries@worth-pc.gov.uk)



Telephone

01342 713407

## Friday Friends

We meet once a month on a Friday in The Hub. Come and join us for a cuppa, cake and a chat.

Please call Pam Harrison on 01342 717194 for more information



We have one of the better meteor showers coinciding with a dark sky this month. 12th-13th: Perseid meteor shower. Best time for viewing is from 22.00 to 03.00. 14th: Close approach of Jupiter and Mars. 20th-21st: Close approach of Saturn and the nearly full moon, and occultation of Saturn. They will rise at about 21.20 in the east. At around 04.25

Saturn will be occulted by the moon, which means that it will disappear behind it. 27th: Close approach of Mars, Jupiter and the moon. They will rise just before midnight in the northeast. *The average sea temperature for Eastbourne in August is 15.4 degrees.* The Almanac, A Seasonal Guide to 2024 - Lia Leendertz



# In the Spotlight with The Copthorne Players

## Blood Brothers!

Did you ever hear the story of the Johnstone twins? Whether you've seen every single Nolan sister in the musical version, or you're a complete newcomer to the tale, have we got a show for you!

Tickets are now on sale for the Copthorne Players' next show, Blood Brothers (play version). Written by Willy Russell, the legendary Blood Brothers tells the captivating and moving tale of twins who, separated at birth, grow up on opposite sides of the tracks, only to meet again with fateful consequences.

It's a story of the class system, of superstition, of what a mother would do to protect her son. Follow twins Mickey and Eddie from the age of seven ('nearly eight, really!') right through to adulthood, played throughout by the same actors. Eddie, adopted by the upper class Mrs Lyons, lives a very different life to Mickey, kept by the working class Mrs Johnstone.

Marcus Kirby and Matt Barnett are captivating as they transition from the innocence of childhood to the world-weariness of adulthood in 1970s Liverpool, against a backdrop of unemployment and poverty, their lives diverging and then reconverging in the most significant of ways.

Tickets are £14 and you can buy them at [www.copthorneplayers.co.uk](http://www.copthorneplayers.co.uk), or by calling our box office on 07714 133400. The show runs from Wednesday 4th September to Saturday 7th September, including a matinée at 2:30pm on the Saturday.

This amateur production of 'Blood Brothers (Play Version)' is presented by arrangement with Concord Theatricals Ltd. on behalf of Samuel French Ltd. [www.concordtheatricals.co.uk](http://www.concordtheatricals.co.uk)

If you want to get involved with the Copthorne Players or buy tickets to our productions, please keep an eye on our Facebook and Instagram pages [@copthorneplayers](https://www.facebook.com/copthorneplayers), and sign up for our email newsletter via our website, [www.copthorneplayers.co.uk](http://www.copthorneplayers.co.uk).

Megan



## The Copthorne Harvest Festival

Saturday 28th & Sunday 29th September 2024

A weekend at St John's Church to celebrate Harvest!



in St John's church & churchyard

Saturday 28th September  
2.30 – 4pm

## Harvest Fair

Games, stalls & fun activities!

and the winning entries of...

## The Copthorne Flower & Produce Show

- Best: • Photograph of Bee(s) • Lego Castle  
• Seaside Scene on a Plate • Handmade Poppy  
• Flower Arrangement in Cup and Saucer • Last Rose of Summer (Home grown:) • Container of Garden Produce • 5 apples (Home made:) • Tea loaf • Jam Tarts  
• Jar of Jam • Jar of Chutney

£1 per entry

For more details, visit [copthornechurch.org](http://copthornechurch.org)

Sunday 29th September 10.30 am

## Harvest Celebration

All-age service, everyone welcome!

Followed by the harvest lunch - book online.



[copthornechurch.org](http://copthornechurch.org)



# theWI

## INSPIRING WOMEN

Now that the summer has finally arrived, our members have been busy getting out and about, as well as making jams, bakes and craft items for our stall at the Copthorne Carnival. This was a great success. The weather was perfect and it was a joy for us to take part once again in our village carnival. Thanks to all those who supported us on the day, we raised a bumper amount for our funds. We must also pay tribute to the carnival committee who organised the event, and worked tirelessly to make the event run so smoothly. Well done!

In June some of our members attended the National Federation of Women's Institutes AGM at the Royal Albert Hall in London. They heard some very inspirational speakers including Mel B talk about domestic abuse. The delegates were also voting for this year's national campaign, to lobby government to improve NHS access to dentists and dental treatment, which was adopted. Let's hope that they have some success on this important topic.



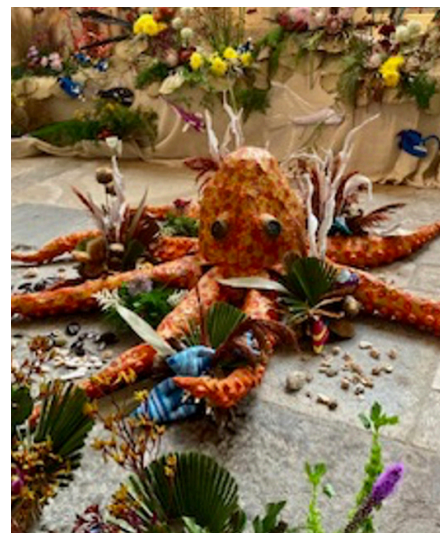
12 members also visited the Flower Festival in Chichester Cathedral. This year's theme was 'The Creation' and there were some beautiful arrangements using sustainable materials as well as the beautiful fresh flowers. The artistry, colours and scent were glorious.

Closer to home we continue to hold regular local walks, coffee mornings and craft sessions as well as our regular monthly meetings.

If you would like to get involved, then please do come along to one of our meetings. Guests are always welcome and we have 'welcome buddies' to make you feel at home. So don't be scared if you are on your own, we are a friendly bunch and look forward to seeing new faces.

Our monthly WI meetings are held on the second Wednesday of each month at 7.45pm in the Village Hall on Copthorne Bank.

\*See us on Facebook Copthorne WI.



**christian  
aid**

Donations can be made at [caweek.org](http://caweek.org)

**THANK YOU  
COPTHORNE!**

You raised £1,986.61 during **Christian Aid Week this year!**

Very many thanks to all who helped in so many ways.

Monica Polley

*For the village  
by the village*

*Thank you to all our  
advertisers and  
contributors, your  
support helps the  
magazine to continue!*

A warm  
welcome!

## During the Week at St John's

The church is open every day, for quiet prayer and reflection.  
There is also a range of regular activities and events

### MONDAYS

Toddler Time: 10.30am - 12pm (Every week)  
STAY & PLAY



Alpha: 8pm - 9.30pm (Starting in September 2024)  
Coffee served at 7.30pm



### TUESDAYS

Coffee Hut: 8.30am - 9am (Every Week)  
Hot drinks served in the churchyard, perfect for the school run or dog walk!

Quiet Led Prayer: 9.15am - 9.30am (Every Week)



Abstract Art Group: 10am - 12pm (Every Week)

### WEDNESDAYS

Holy Communion service: 10.30am (Every Week)  
Followed by coffee and refreshments

Cots 2 Tots: 1.30pm - 2.30pm (Every Week, during school-term times)

St John's Cafe & Games: 4.30pm - 6pm (Every Week)  
Tea, coffee, conversation and board games



The Prayer Course II 8 - 9pm  
(Starting in September 2024)



### THURSDAYS

Coffee Hut: 8.30am - 9am (Every Week)  
Hot drinks served in the churchyard, perfect for the school run or dog walk!

Quiet Led Prayer: 9.15am - 9.30am (Every Week)



### FRIDAYS

Abstract Art Group: 10am - 12pm (Every Week)

Bereavement Support Group: 2pm - 4pm (3rd Friday of the month)  
Please call the church office for more details 01342 712063

### SATURDAYS

Work Party: 9.15am - 12.30pm (The 1st Saturday of the month)  
Caring for the church and churchyard



Coffee, Cake and Conversation: 10am - 12pm  
(The 1st Saturday of the month)



### SUNDAYS

Services are held every week!  
Visit [copthornechurch.org](http://copthornechurch.org) for more details.

St John the Evangelist  [copthornechurch.org](http://copthornechurch.org)





## ST CATHERINE'S HOSPICE

### Abseil from the Spinnaker Tower!

St Catherine's Hospice is looking for 40 adventurous fundraisers to take part in an epic 100 metre abseil down the iconic Spinnaker Tower in Portsmouth, to raise funds for its vital end of life care in East Surrey and West Sussex.

Taking place on Sunday 22 September, this thrilling challenge will give people the chance to descend one of the South East's most legendary landmarks, whilst enjoying unmissable views across Portsmouth harbour, the Solent, and the Isle of Wight at the same time.

This is St Catherine's second abseil at the Spinnaker Tower. People can sign up as an individual or as part of a team and will be supported with their fundraising by St Catherine's staff.

Carol Stimpson was one of the 20 brave hospice supporters who abseiled down the Spinnaker Tower last year despite her fear of heights. She said, 'I'm not good with heights and still have a fear of them, but that's where the challenge came in. I thought for the hospice I'm going to do it and put my fear to one side. My dad died at the hospice in Malthouse Road in 2000 and he got such wonderful care. I also worked

there for 18 years as a community nurse and receptionist, and was very proud to do so. The hospice is a very special place for me, like it is for a lot of people'.

Carol said once word spread about her abseil challenge she had 'fantastic support'. 'Initially I was worried about whether I'd raise the sponsorship but in the end I raised around £1,300. People were so generous. I had neighbours knocking on my door sponsoring me and that spurred me on'.

But how did she feel on the day of her big challenge? 'Going up in the lift at the tower I was a wreck', confessed Carol, 'I was crying and I cried abseiling down the tower too, but I don't regret doing it. I felt very safe and the people doing the abseil were excellent. I was in control as I went down and I remembered I was doing it for the hospice, for my Dad and also to help other families going through a difficult time. Even now it feels surreal I did it. I still can't believe it, but I'm proud and chuffed with myself. It was an amazing experience and I can tick it off my bucket list now. My medal is hung proudly in my kitchen and I'm even open minded to doing it again!'.

*Pictured Left to Right: Carol with fellow abseilers, Shelley, Sarah and James.*

And if someone else is thinking about taking on this epic challenge what fundraising tips does Carol have? 'Don't underestimate people', she says. 'If you ask for donations a lot of people will happily donate as the hospice is such a special place'.

It costs £30 to register for an abseil which includes an exclusive St Catherine's orange abseil t-shirt, an abseil medal and a free ticket to the Spinnaker's viewing platform on the day.

Abseilers are asked to fundraise at least £250 for St Catherine's, but a bespoke fundraising pack full of fundraising ideas and tips will help people to reach this minimum target. If people raise £500 or more, the abseil will include a GoPro video and photograph.

To secure one of 40 exclusive places please visit: [www.stch.org.uk/spinnaker-tower-abseil-2024/](http://www.stch.org.uk/spinnaker-tower-abseil-2024/) or call St Catherine's fundraising team on 01293 447361. Sign up now to avoid disappointment!




**Got questions?**  
#TryAlpha

Starting on Mon 9<sup>th</sup> September at St John's Church  
To book a place visit: [copthornechurch.org](http://copthornechurch.org)



## ST JOHN'S CAFÉ & GAMES

Everyone is welcome!

 Tea & Coffee
  Conversation
  Board Games

Every Wednesday 4.30 – 6 pm



## The Copthorne Harvest Festival

Saturday 28th & Sunday 29th September 2024

A weekend at St John's Church to celebrate Harvest!







# Pre-School Corner

## Peter Pan Playgroup



What another busy last half term. We had a pirate day with the children dressing up, using imaginative play with our pirate/mermaid small world, walking the plank, searching for buried treasure, and making treasure maps with 'x' marking the spot!

We also had a sponsored obstacle course to fundraise for new equipment including for our garden. The children were fantastic, completing so many laps - a huge thank you to our families for their kind generosity.

Carnival was once again upon us. The children helped with some of the decorations for our float whilst learning about pollution in the oceans, the effects on seafife, and what we should be doing with our rubbish. Our stall also did well - thank you again to our families.

Well, we can't believe it's the end of another academic year. Our school leavers are preparing for their transition to their new schools and we'll celebrate with a party plus graduation ceremony. We have watched them flourish and wish them all the best on their new learning journey!

We are open term time for children aged 2-4, Mon-Fri, either 9.00am-3.00pm or 9.15am-3.15pm, with the option of an early start at 8.30/8.45am, plus lunch clubs. Please see our website for more details. If you are interested in a place, we now have a waiting list, please either email or telephone.



**f Like our Facebook page!**  
Peterpan playgroup Copthorne

Village Hall, Copthorne Bank  
RH10 3RE Tel: 07745 255501  
www.peterpanplaygroup.co.uk  
info@peterpanplaygroup.co.uk



A big thank you to all who donated to our stall (donating bottles or having a go at the carnival). We raised an amazing amount of money to help us buy new equipment for our pre-schoolers.

We have been in our new building for almost half a year now, and both the staff and children are loving it. We have been very lucky and had AstroTurf put in after Easter, so we can get out in the garden and have free flow whatever the weather.

We're full until Sept 2025 and advise those who would like a space to sign up quickly.

We will be saying goodbye to Karen at the end of the school year. Karen has been with us for many many years and has been amazing, and we wish her all the best. You will be missed, and we hope you enjoy every moment of your retirement!

Our pre-school hours are Monday to Friday 9.15 to 12.15, with an option of lunch until 1.15 or an option of all day until 2.15. We also offer an early start at 8.45, and we accept 15 hours and 30 hours funding. We take children from 2 to 4 years old, term time only.

Please contact Kim or Jo by emailing [stjohnssunshine@hotmail.co.uk](mailto:stjohnssunshine@hotmail.co.uk) for more information.



**f Like our Facebook page!**  
St. John's Sunshine Preschool Copthorne

The Delmar Morgan Centre, Copthorne Bank, RH10 3QX Tel: 07963 501762  
www.stjohnssunshinepreschool.co.uk  
stjohnssunshine@hotmail.co.uk



**Wednesdays**  
**1:30-2:30pm, term time,**  
**NOW IN THE CHURCH**

• **No booking needed**

• **Buggies can be safely brought into the church**

A great place to meet new people if you have just had a baby or have a toddler/pre-schooler that likes to play! Come and have a chat and a coffee and let your child enjoy socialising with others.

- Separate baby area with mats and baby toys
- Wide range of toys & activities
- Baby weighing scales

**For more info,**  
**contact Annabelle**  
**on 07732 335193**



## Toddler Time!

St John's Church, Copthorne

• **STAY & PLAY** •  
For parents & carers with children up to Reception age

Every Monday 10.30am - 12pm

St John the Evangelist copthornechurch.org

# WHAT'S ON

## Copthorne Social Club

Copthorne Bank, RH10 3RE  
Tel: 07710 019516

Visit us on Facebook Copthorne Social-Club

AUGUST

3 **MEMBER'S DAY**

Beer, Band & BBQ

11 with **RADARS DUO**  
4-6pm

18 with **ANDY STIBBS**  
4-6pm

25 with **CHARLIE COOPER**  
4-6pm

SEPTEMBER

28 Live Music at 8pm:  
**POACHER**

OCTOBER

26 **HALLOWEEN PARTY**  
Full details to follow:

**PLUS:**

**MEAT RAFFLE EVERY**  
**FRIDAY NIGHT** at 9.30pm

## What's On Village events

AUGUST

10 Copthorne Chapel  
**Margaret Watson Harp Music**  
with Fish 'n' Chips

SEPTEMBER

4-7 Copthorne Players  
**Blood Brothers**

28 St John's Church  
**Flower & Produce Show**

OCTOBER

5 **Scouts and Guides**  
**Jumble Sale**







## YOUR PERFECT LOCAL VENUE!

Nestled in the grounds of St John the Evangelist's church, in the centre of the village, The Parish Hub makes the ideal choice for any celebration or event.

The large Main Hall and smaller South Room offer the community flexible hire spaces in a beautiful setting. Fair, competitive rates for both casual and regular bookings.

Audio/Visual systems in both rooms • Fully equipped catering kitchen • Disabled access including lift • Hearing Loop • Air conditioned throughout  
Wedding packages available • Corporate/Training • Parties/Celebrations • Baptism Parties • Funerals/Wakes • Groups/Clubs/Activities



*'We are delighted to introduce a new Yoga class with Susana Crespo on Monday afternoons, starting September 2. The Paracise class announced in the last magazine is not continuing. Wednesday mornings, therefore, are available to hire should you have a mid-week class or activity for which you are seeking a venue. There are still some weekend slots in August and September available for your party or special celebration event.'*

## WHAT'S ON AT THE HUB?

### AT A GLANCE CLASSES & GROUPS AT THE HUB

	Morning	Afternoon	Evening
Mon	Precision Pilates	Yoga with Sue Springfit	Apple Tree Yoga Council Meetings (ev. other week)
Tues	Little Kickers Move It or Lose It	Springfit	Fire Fitness 7pm & 8pm
Wed	Council Working Party (ev. other wk)	Sadowski Latin Dance	Sadowski Latin Dance Pilates with Saddaff
Thurs	Springfit	Springfit Cop Art Group	Sadowski Latin Dance
Fri	Springfit	Friday Friends (1st Friday) Bereavement Group (3rd Friday)	Springfit
Sat	Springfit	AVAILABLE TO HIRE FOR PARTIES AND EVENTS	
Sun		AVAILABLE TO HIRE FOR PARTIES AND EVENTS	

Activities in the Main Hall    Activities in the South Room

The Parish Hub, Borsers Arms Road, Copthorne RH10 3ZQ  
www.copthorneparishhub.org    Copthorne Parish Hub

For hire of the South Room,  
please contact Hannah:  
deputyclerk@worth-pc.gov.uk

### HIRERS DIRECTORY

**Springfit Gymnastics**  
copthorne@springfit.org

**Fire Fitness**  
firefitnesspt@outlook.com  
FB - Fire Fitness PT  
Tuesday 7pm Circuits & 8pm  
Padwork Fitness

**Apple Tree Yoga Spirit of Wellness**  
07853 902828  
prashant.bhojani44@gmail.com

**Sadowski Dance**  
Ballroom and Latin Dance Classes  
info@sadowskidance.com

**Precision Pilates**  
nicolakeogh@hotmail.com

**Friday Friends**  
Pam Harrison - 01342 717194

**Pilates with Saddaff**  
07943519097

**Move It or Lose It**  
Tracey Dowling 07857 003219

**Little Kickers**  
Yvonne Phillips 07973 130968

**Yoga with Sue**  
susanacrespo72@gmail.com

For hire of the Main Hall,  
please contact Tracey:  
parish.hub@copthornechurch.org  
07853 653649

Pollinating insects play a vital role in our environment, ensuring that many of our crops and wild plants are able to set seed and produce fruit.

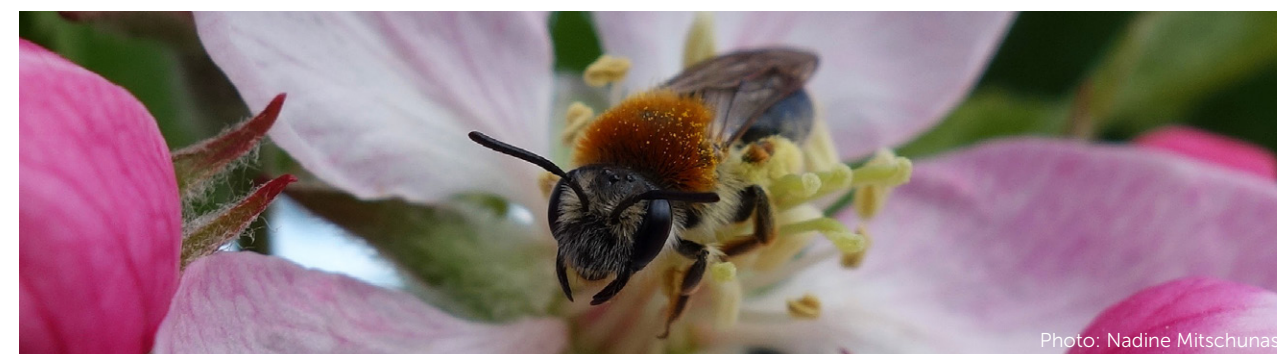


Photo: Nadine Mitschunas

**Can you help?** We need to know how pollinator populations are changing, and with help from volunteers the UK Pollinator Monitoring Scheme (PoMS) runs two large-scale pollinator surveys.

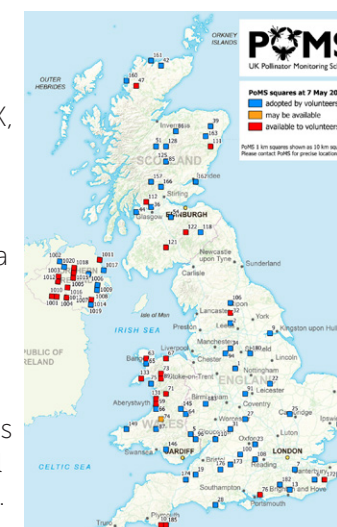
### Flower-Insect Timed Counts (FIT Counts) FITCount

- These can be done at any location with flowers
- At any time when weather is good enough, from 1 April to 30 September
- Choose a patch of target flowers and count all insects landing on them within 10 minutes
- Insects are identified to broad groups (e.g. bumblebees, hoverflies etc.)
- Send in your count results via the PoMS website or download the free FIT Count app using this QR code.



### 1 km square survey

- Set out pan-traps in the morning, collect insect specimens at the end of the day, and return the samples to the PoMS labs
- Takes place in 95 pre-defined 1 km squares throughout the UK, from farm fields to mountain sides (see map)
- Volunteers adopt a square and visit it four times during the summer
- Equipment, training and access permissions are all provided by PoMS.



For more information, FIT Count guides and videos go to: [www.ukpoms.org.uk](http://www.ukpoms.org.uk)

Email: [poms@ceh.ac.uk](mailto:poms@ceh.ac.uk)

Follow us on X (Twitter): [@POMScheme](https://twitter.com/POMScheme)



Check your onion skins as you harvest them to tell if the coming winter is going to be harsh: 'Onion skin thin, a mild winter coming in, Onion skin thick and tough, coming winter cold and rough.' There is some thought that this folklore could be linked to La Niña years. This weather phenomenon - the cold counterpart to warm El Niño - is characterised by a dry summer or even summer drought, which would lead to thickened skins on onions, followed by a cold winter.

Michaelmas Day on 29th September is traditionally the end of the harvest season, and is another one of the saints' days that set the tone for the weather of the following period: 'As the wind is on St Michael's Day, so it will be for three months.' Clear weather on Michaelmas Day is also a sign of a long, cold winter in Irish folklore: 'Michaelmas Day be bright and clear there will be two "winters" in the year.' \*

The average sea temperature for Eastbourne in September is 15.4 degrees. \*The Almanac, A Seasonal Guide to 2024 - Lia Leendertz





Join us at the  
**Copthorne Jubilee Pavilion**  
in August and September

Sign up for  
**WHAT'S ON** emails  
Charity no 1144056



Monday	09.30-11.30	Mutts with Manners – puppy training	Puppy training/new & older puppy classes ++ Lisa Childs 07941184793
Tuesday	10.00-12.00	Baby Ballet – various classes	Miss Sophie 07702 511295
	*14.00-16.00	WI Craft Group (*4 <sup>th</sup> Tuesday only)	in the Meeting Room. Contact Copthorne WI.
	17.30 + 19.00	Slimming World	Debbie 07584 166228
Wednesday	09.00 + 10.30	Slimming World	Debbie 07584 166228
	16.00-18.00	WPC Youth Club	Drew Sewell youth@worth-pc.gov.uk
	*19.15 doors open for 19.30 prompt start	Pavilion QUIZ night dates <ul style="list-style-type: none"><li>July 31st</li><li>August 28<sup>th</sup></li><li>September 25<sup>th</sup></li></ul>	Relax & have fun testing your knowledge. £5 pp. BYOB. Snack Shop offering hot + cold drinks, crisps, olives + more for sale. Raffle. Teams of 6 or pair up. Book with Amanda.
	*19.30	Copthorne Book Club *(monthly) August 21 <sup>st</sup> September 18 <sup>th</sup>	See the Facebook page or contact Amanda
Thursday	open from 09.00 till lunchtime	Run2Paris Event: September 12 <sup>th</sup> Pavilion Café open 9.00-14.00 for everyone.	The 4 <sup>th</sup> year at the Pavilion of this Charity run, raising funds for SAFFA and Parkinson's UK. The Pavilion Café will be open, please support us, but walk up! Car park will be full.
Friday	09.30-10.30	Posture, Balance & Stretch class	Pre-book with Helen on 07838 381153
	*Open from 13.00 to 16.00	*Social Afternoon (3 <sup>rd</sup> Friday) <ul style="list-style-type: none"><li>August 16th</li><li>September 20th</li></ul>	Everyone welcome. £5pp. New + included – bingo, croquet. New – For attendees: 30 minute treatments (pay extra), such as seated back massage, Indian head massage, hand or feet treatments.
Saturday	13.00 *13.00 (planned)	Cricket until 31 <sup>st</sup> August. *Pavilion Café open for spectators Football starts 7 <sup>th</sup> September.	Spectators welcome, bring your own chairs. *NEW venture, please support us.
Sunday	13.30	Some cricket matches – until 31 <sup>st</sup> August. Football starts 8 <sup>th</sup> September.	Watch our Facebook page for up to date news.
Copthorne Village Association AGM	19.30	Thursday 19 <sup>th</sup> September. All welcome.	Updates will be on CSCA Facebook page.

Facebook: Copthorne Sports and Community Association - Email: [bookings\\_cscs@outlook.com](mailto:bookings_cscs@outlook.com) - Website: [www.copthorne-sca.co.uk](http://www.copthorne-sca.co.uk)

## Copthorne Ladies Club

This month sees the AGM for the Copthorne Ladies Club and a roundup of all the interesting and fun things we have taken part in this year.

From actors portraying Churchill, to Arabian dancing, to Worth Parish Council, several games nights (and we are a competitive lot!), to amazing charity presentations from Headway Brain Injury and St Catherine's Hospice, to painting pottery . . . it's certainly been a busy year!


Our club has been running for over 60 years now and we are looking for new members to join us. We meet every first Thursday of the month at the Guide Hall, Borsers Arms Road for 7.45pm, for a chat, presentation,

activity, games, a cup of coffee or tea and a biscuit. At our Christmas meeting we enjoy a lovely Christmas dinner with entertainment and even a visit from St Nick himself!

Our next years programme sees the return of Mr Tony Harris, who is incredibly entertaining and very informative, but this time as the Iron Lady herself, Margaret Thatcher . . . I cannot wait to see Tony in a twin set and pearls! As well as the return of chair yoga, some four-legged friends visiting us, a tour of The Beehive, more games and making things activities.

Do come and join us!

Beth Hilton, Secretary



**HAPPY FEET**  
Song & Dance  
Company

*Happy Feet Song and Dance Company*  
Friendly and fun classes for ages 3-18!

Musical Theatre, Ballet, Street Jazz,  
Jazz, Lyrical, Tap, Adult Tap and  
Singing.

For more information or to book a free trial contact principal Sarah Jones

Email: [sarahjones\\_happyfeet@outlook.com](mailto:sarahjones_happyfeet@outlook.com)  
Phone: 07950 470493



**JUMBLE SALE**  
on  
**Saturday 5<sup>th</sup> October**  
at the Scout & Guide Centres  
Borsers Arms Road  
Copthorne  
RH10 3LJ

12:00 for Furniture, Bric a Brac, Toys, Books & Shoes

12:30 for Clothes & Soft Furnishing

Admission 50p

Payment by cash or card accepted

For any questions please contact  
[Jill.creek@egscouts.org.uk](mailto:Jill.creek@egscouts.org.uk) or 07720533875



**THE MARTINS**  
INDEPENDENT FUNERAL DIRECTORS

THE CARING AND PROFESSIONAL  
SERVICE FOR WHICH WE ARE  
RENOWNED IS AVAILABLE AT

**38-40 Broadfield Barton,  
Crawley, RH11 9BA**  
**01293 552345 (24hrs)**  
[www.themartinsfuneraldirectors.co.uk](http://www.themartinsfuneraldirectors.co.uk)

Free parking in front of the premises or if you wish arrangements can be made in your own home.



An established family concern owned by Alex Jones and family.

**Abstract Art Group**  
at St John's church, Copthorne  
Every Tuesday & Friday at 10am - 12pm

All artistic abilities and styles welcome!



If you would be interested in joining us, we do have a limited number of places.

You are also welcome to watch us at work.



Donations towards the cost of materials used by the Abstract Art group are gratefully received.

GROWING IN LOVE for God and each other  
office.copthornechurch@gmail.com  
Tel: 01342 712063

St John the Evangelist  [copthornechurch.org](http://copthornechurch.org)



SPECIALIST IN  
**BATHROOM & KITCHEN INSTALL**  
**TILING & FINISHES**  
 WET ROOMS POWER SHOWERS  
 RADIATORS CYLINDERS TANKS  
 QUALITY FINISHES REASONABLE RATES  
 CONTACT IAN FOR YOUR FREE QUOTE  
**m 07986 783825**  
**t 01342 713885**



**MANSELL McTAGGART**  
 ESTATE AGENTS SINCE 1947  
 FREE No obligation valuations  
 Copthorne Office Tel: 01342 717400

**LD ROOFING LTD**  
 Build the Roof of Your Dreams  
 Guaranteed Quality You Can Trust  
**0779 108 2324**  
**Roofingcopthorne@outlook.com**  
 CONTACT US **01342 713259**  
 FREE NO OBLIGATION QUOTE  
 • SOFFITS  
 • FASCIAS  
 • GUTTERS  
 • FLAT ROOFING SPECIALIST  
 • TILING  
 • CLADDING

**A.SAWYER GLAZING**  
 ALUMINIUM & UPVC  
 DOUBLE GLAZING REPAIRS  
 Misted or Broken Sealed Units:  
*from £50 + VAT*  
 Hinges:  
*from £45 + VAT*  
 Espag Window Mechanisms:  
*from £60 + VAT*  
 FREE QUOTATIONS • NO CALLOUT CHARGE  
**07984983805**  
**andrew.sawyer@virgin.net**  
 Which? Trusted trader  
 Checkatrade.com Where reputation matters  
 Approved Trader

**D.M.C**  
 BUILDING SERVICES  
 ALL BUILDING WORKS UNDERTAKEN  
**01342 719328 or 07702 410258**  
 email **dmcbs@aol.com**

**Copthorne Flooring**  
 ■ Specialists in Amtico & Karndean LVT  
 ■ Solid wood, carpets & home sample service  
 07971848303  
 @copthorneflooring

**David O'Donnell** Copthorne-based  
**Window Cleaning**  
 I also offer the following cleaning services:  
 • Conservatory roofs  
 • Soffits and fascias  
 • Cladding  
 • Gutters emptied  
**07766 566573**  
**dodonnell1@btinternet.com**

**TD3 CONSTRUCTION**  
 DESIGNED & BUILT TO LAST.  
 • LANDSCAPING  
 • EXTENSIONS  
 • LOFT CONVERSIONS  
 • RENOVATIONS  
 • BATHROOMS  
 TEL: 07946360754  
 EMAIL: ADMIN@TD3CONSTRUCTION.CO.UK  
 SOCIAL MEDIA: @TD3CONSTRUCTION

**GARDEN OF EDEN**  
 C O P T H O R N E  
 - LAWN/HEDGE CUTTING -  
 - BORDER MAINTENANCE -  
 - GARDEN CLEARANCE -  
 C O P T H O R N E & S U R R O U N D I N G A R E A S  
**IAN WOODCOCK**  
**07939162771**  
**GARDENOFEDENCOPTHORNE.COM**

**JOHN ALLEN**  
 Building Contractor  
 Brickwork, Groundwork and most Building Work undertaken  
 'Fagus', 65 Newtown  
 Copthorne, Sussex RH10 3LX  
 Tel/Fax: **01342 716694**  
 24-hr A-machine  
**jacopthorne@gmail.com**

**Copthorne Garden Services**  
 All aspects of Gardening Services  
 Domestic & Commercial  
 • Fencing • Tree Surgery • Stump Grinding  
 • Winter Pruning • Tree Felling & Forestry  
 • Landscaping • Turfing • Hedge Cutting  
 • Jungle Clearances • Decking • Fully Insured  
**M 07759 857 362 T 01342 714 844**  
**mb83@hotmail.co.uk**  
 Find us on Facebook

**Connells**  
**ALL UNDER ONE ROOF**  
 RELOCATION SERVICE  
 MORTGAGE SERVICES  
 PROPERTY CONVEYANCING  
 NEW HOMES  
 LPA RECEIVERS  
 ASSET MANAGEMENT  
 ENERGY PERFORMANCE CERTIFICATE  
 SURVEY & VALUATIONS  
 SALES & LETTINGS  
 CALL US TODAY ON **01342 717 727**  
 AND LET US HELP!

**ST JOHN the EVANGELIST**  
 C O P T H O R N E  
 Find updates and enjoy services  
 at **copthornechurch.org**